



Dare to Venture



Advanced exploration in historic Chibougamau, Quebec
GOLD–COPPER mining camp and Royalty on Iron–Vanadium Project

100% OWNED former mines and unmined deposits including:

- **8 former copper and gold mines** many open at depth below 300 metres
- **Including 2 unmined, partially defined deposits (Au, Ag, Zn-Berrigan) and (Cu, Au-Bateman Bay)**

Bateman Bay - 678,750 tonnes grading 1.76% Cu, 4.13 g/t Au, 16.71 g/t Ag to 183 m or 359,848 tonnes grading 2.64 % Cu, 4.35 g/t Au to 247m. Open to depth and along strike

Berrigan - (1,388,915 tons) 3.17% Zn and 1.77 g/t Au
Open to depth and along strike

- **Large open-pittable Iron -Vanadium deposit**

Indicated Resource: 113.5 Mt 30.9% Magnetite with potential to recover 35 Mt of concentrate grading 65.3% Fe and 0.6% V₂O₅ and 1.2% TiO₂

Inferred Resource: 520.6 Mt Magnetite with potential to recover 64.4% Fe and 0.6% V₂O₅ and 1.7% TiO₂ (NI 43-101 compliant)
Road access. Owned by Vanadium One Iron Corp. (VONE-TSXV).
Share position in VONE and 2% Gross Metal Royalty

- Large exploration land package with numerous **drill-ready precious and base metal targets**



Experienced management team

- 46,695,042 shares outstanding
- 22.88% owned by management and directors

SHORT TERM OBJECTIVES

- **Discovery (C-3 Gold Copper Zone)**
- **Advance high quality targets by additional definition drilling**

** Unless specified, resources are not NI 43-101 compliant*



C-3 Gold Copper Discovery

2019 – 2020 Drill Results – Bateman Bay/ C-3 Zone

BJ-19-17 → 4.33% Cu, 3.69 g/t Au, 19.62 g/t Ag, 0.020% Co
over 22.0m

including

BJ-19-17 → 3.46% Cu, 2.75 g/t Au, 10.81 g/t Ag, 0.023% Co
over 12.47m

and

BJ-19-17 → 8.49% Cu, 7.55 g/t Au, 49.22 g/t Ag, 0.022% Co
over 5.90m

BJ-19-18 →

over 9.20m
BJ-19-21 → 3.06% Cu, 2.96 g/t Au, 13.04 g/t Ag, 0.023% Co

over 15.68m

BJ-19-21 → 4.01% Cu, 4.9 g/t Au, 16.17 g/t Ag, 0.029% Co

over 4.38m
BJ-19-21 → 4.20% Cu, 3.73 g/t Au, 18.63 g/t Ag, 0.031% Co

over 5.90m
BJ-19-22 → 3.02% Cu, 0.48 g/t Au, 20.20 g/t Ag, 0.025% Co

over 45.4m

including
BJ-19-22 → 4.44% Cu, 1.1 g/t Au, 15.57 g/t Ag, 0.047% Co

BJ-19-22 → 5.64% Cu, 0.82 g/t Au, 61.12 g/t Ag, 0.037% Co

BJ-19-22 → 3.64% Cu, 0.37 g/t Au, 16.73 g/t Ag, 0.029% Co

over 10.5m

and
BJ-19-22 → 1.66% Cu, 2.01 g/t Au, 5.70 g/t Ag, 0.014% Co

over 11.0m

BJ-20-27 → 2.49% Cu, 4.24 g/t Au, 11.06 g/t Ag, 0.029% Co
over 9.25m

and

BJ-20-27 → 4.41% Cu, 0.55 g/t Au, 16.18 g/t Ag, 0.017% Co
over 5.55m

BJ-20-29 →

over 10.65m
including

BJ-20-29 →

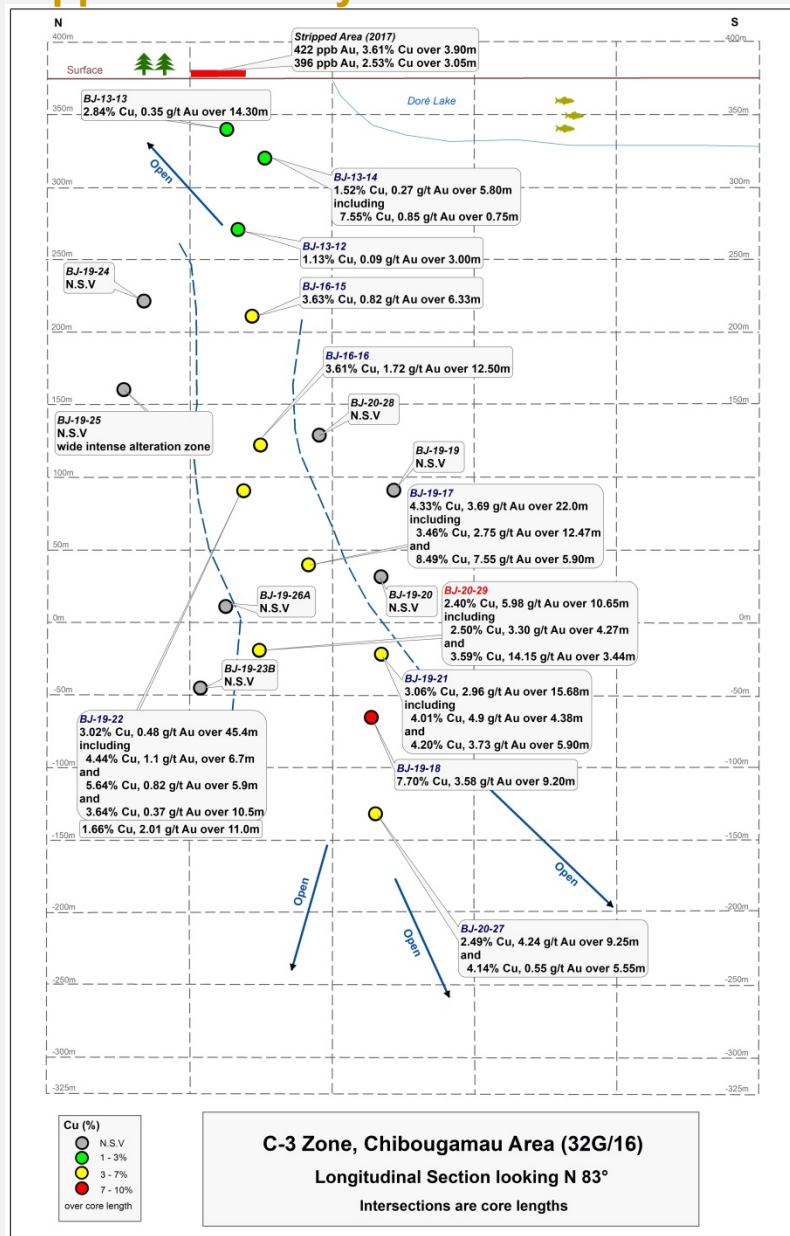
over 4.27m
and

BJ-20-29 →

over 3.44m

core lengths not true width

core lengths not true widths

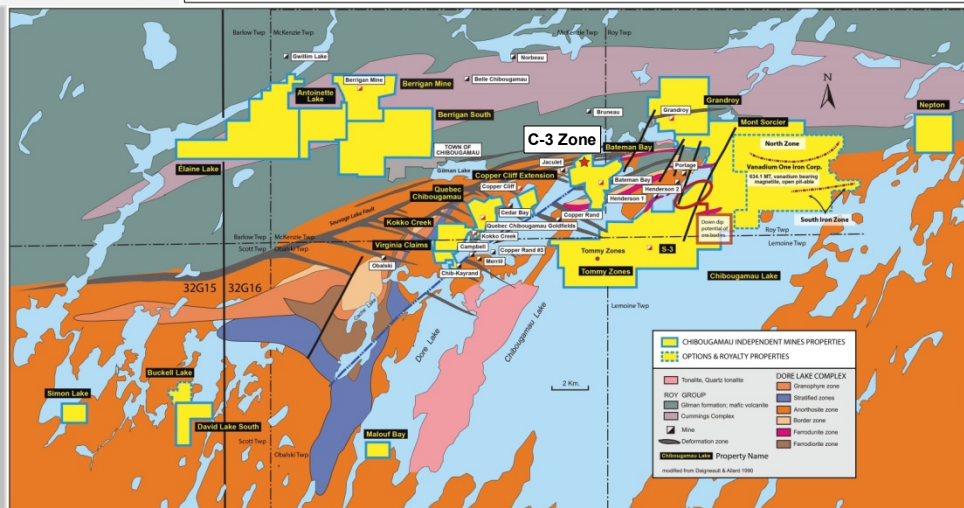


Jack Stoch, President

86, 14th Street
Rouyn-Noranda,
Quebec
J9X 2J1 Canada

T 819.797.5242

F 819.797.1470



TSX-V : CBG

WWW.CHIBOUGAMAUMINES.COM | info@chibougamaumines.com

Frankfurt, Stuttgart, Lang & Schwarz Stock Exchanges