



***Dare to Venture***



**Advanced exploration** in historic Chibougamau, Quebec  
GOLD–COPPER mining camp and Royalty on Iron–Vanadium Project

**100% OWNED former mines and unmined deposits including:**

- **8 former copper and gold mines** many open at depth below 300 metres
- **Including 2 unmined, partially defined deposits (Au, Ag, Zn-Berrigan) and (Cu, Au-Bateman Bay)**

**Bateman Bay** - 678,750 tonnes grading 1.76% Cu, 4.13 g/t Au, 16.71 g/t Ag to 183 m or 359,848 tonnes grading 2.64 % Cu, 4.35 g/t Au to 247m. Open to depth and along strike

**Berrigan** - (1,388,915 tons) 3.17% Zn and 1.77 g/t Au  
Open to depth and along strike

- **Large open-pittable Iron -Vanadium deposit**

**Indicated Resource:** 113.5 Mt 30.9% Magnetite with potential to recover 35 Mt of concentrate grading 65.3% Fe and 0.6% V<sub>2</sub>O<sub>5</sub> and 1.2% TiO<sub>2</sub>

**Inferred Resource:** 520.6 Mt Magnetite with potential to recover 64.4% Fe and 0.6% V<sub>2</sub>O<sub>5</sub> and 1.7% TiO<sub>2</sub> (NI 43-101 compliant)  
Road access. Owned by Vanadium One Iron Corp. (VONE-TSXV).  
Share position in VONE and 2% Gross Metal Royalty

- Large exploration land package with numerous **drill-ready precious and base metal targets**



## **Experienced management team**

- 53,076,570 shares outstanding
- 24.14% owned by management and directors

## **SHORT TERM OBJECTIVES**

- **Discovery (C-3 Gold Copper Zone)**
- **Advance high quality targets by additional definition drilling**



*\* Unless specified, resources are not NI 43-101 compliant*

# C-3 Gold Copper Discovery

## 2019 – 2020 Drill Results – Bateman Bay/ C-3 Zone

**BJ-19-17** → 4.33% Cu, 3.69 g/t Au, 19.62 g/t Ag, 0.020% Co over 22.0m including

**BJ-19-17** → 3.46% Cu, 2.75 g/t Au, 10.81 g/t Ag, 0.023% Co over 12.47m and

**BJ-19-17** → 8.49% Cu, 7.55 g/t Au, 49.22 g/t Ag, 0.022% Co over 5.90m

**BJ-19-18** → 7.70% Cu, 3.58 g/t Au, 33.25 g/t Ag, 0.031% Co over 9.20m

**BJ-19-21** → 3.06% Cu, 2.96 g/t Au, 13.04 g/t Ag, 0.023% Co over 15.68m including

**BJ-19-21** → 4.01% Cu, 4.9 g/t Au, 16.17 g/t Ag, 0.029% Co over 4.38m

**BJ-19-21** → 4.20% Cu, 3.73 g/t Au, 18.63 g/t Ag, 0.031% Co over 5.90m

**BJ-19-22** → 3.02% Cu, 0.48 g/t Au, 20.20 g/t Ag, 0.025% Co over 45.4m including

**BJ-19-22** → 4.44% Cu, 1.1 g/t Au, 15.57 g/t Ag, 0.047% Co over 6.7m

**BJ-19-22** → 5.64% Cu, 0.82 g/t Au, 61.12 g/t Ag, 0.037% Co over 5.9m

**BJ-19-22** → 3.64% Cu, 0.37 g/t Au, 16.73 g/t Ag, 0.029% Co over 10.5m and

**BJ-19-22** → 1.66% Cu, 2.01 g/t Au, 5.70 g/t Ag, 0.014% Co over 11.0m

**BJ-20-27** → 2.49% Cu, 4.24 g/t Au, 11.06 g/t Ag, 0.029% Co over 9.25m and

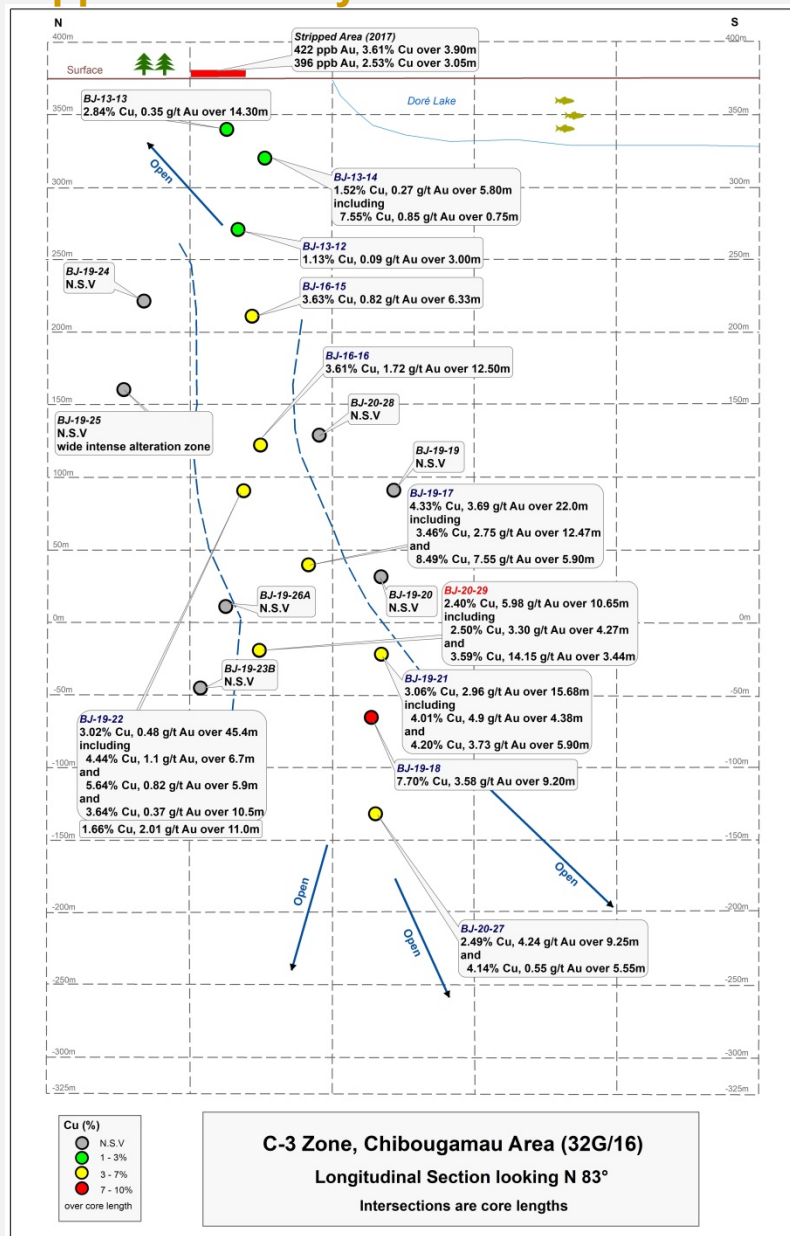
**BJ-20-27** → 4.41% Cu, 0.55 g/t Au, 16.18 g/t Ag, 0.017% Co over 5.55m

**BJ-20-29** → 2.40% Cu, 5.98 g/t Au, 13.0 g/t Ag, 0.024% Co over 10.65m including

**BJ-20-29** → 2.50% Cu, 3.30 g/t Au, 11.9 g/t Ag, 0.019% Co over 4.27m and

**BJ-20-29** → 3.59% Cu, 14.15 g/t Au, 21.2g/t Ag, 0.044% Co over 3.44m

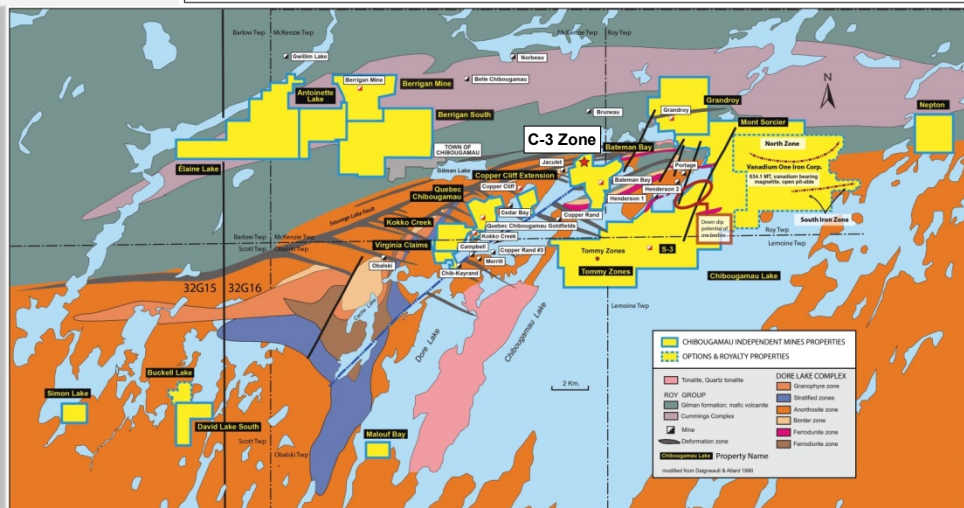
core lengths not true widths



Jack Stoch, President

86, 14<sup>th</sup> Street  
Rouyn-Noranda,  
Quebec  
J9X 2J1 Canada

T 819.797.5242  
F 819.797.1470



TSX-V : CBG

WWW.CHIBOUGAMAUMINES.COM | info@chibougamaumines.com

Frankfurt, Stuttgart, Lang & Schwarz Stock Exchanges