



**Chibougamau  
Independent  
Mines Inc.**

**Investor Presentation**



## **Forward-Looking Statements**

Except for historical information, this presentation may contain certain “forward-looking statements”. These statements may involve a number of known and unknown risks and uncertainties and other factors that may cause the actual results, level of activity and performance to be materially different from the expectations and projections of Chibougamau Independent Mines. No assurance can be given that any events anticipated by the forward-looking information will transpire or occur, or if any of them do so, what benefits Chibougamau Independent Mines will derive therefrom.

# Chibougamau Mining Camp – Quebec



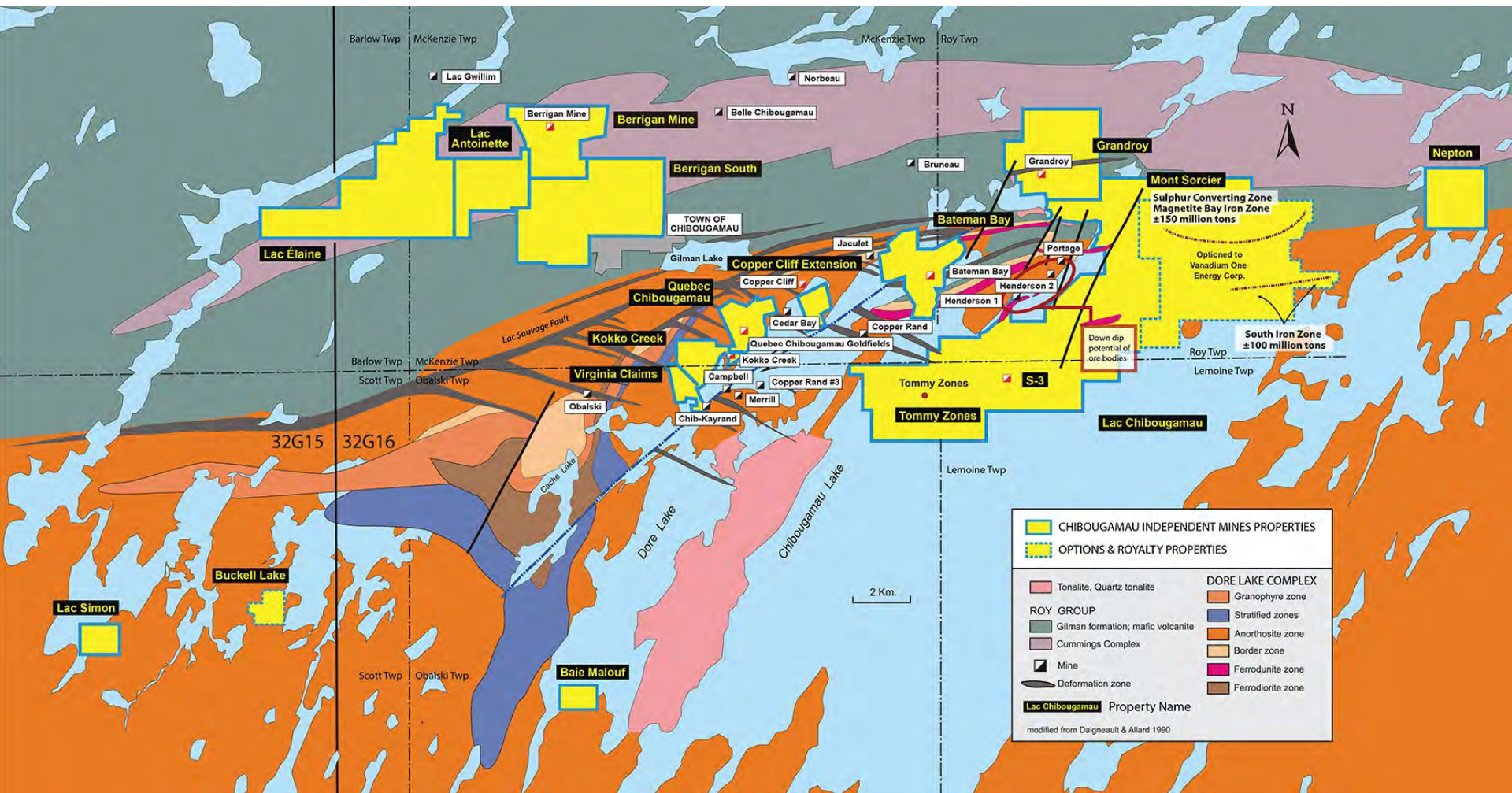
- 100% interest in a major land package in the Chibougamau Mining Camp – 10,349 hectares (25,572 acres)
- 5 former copper-gold mines
- Down dip of 3 large copper-gold deposits
- 2 unmined deposits (Au, Ag, Zn - Berrigan) & (Cu, Au – Bateman Bay)
- 1 unmined iron/titanium/vanadium deposit
- Several partially defined copper-gold zones
- Large exploration land package with numerous targets
- No environmental liabilities

# Doré Lake Complex

- Historical production
  - **47.6 million tons**
    - 1.6 billion lbs of Cu
    - 3.2 million oz Au
  - **Average grade**
    - 1.69% Copper
    - 2.40 g/t Gold
- 3,000 tpd mill and permitted tailings facility central to CIM property package

Source: C Bay Minerals Inc.

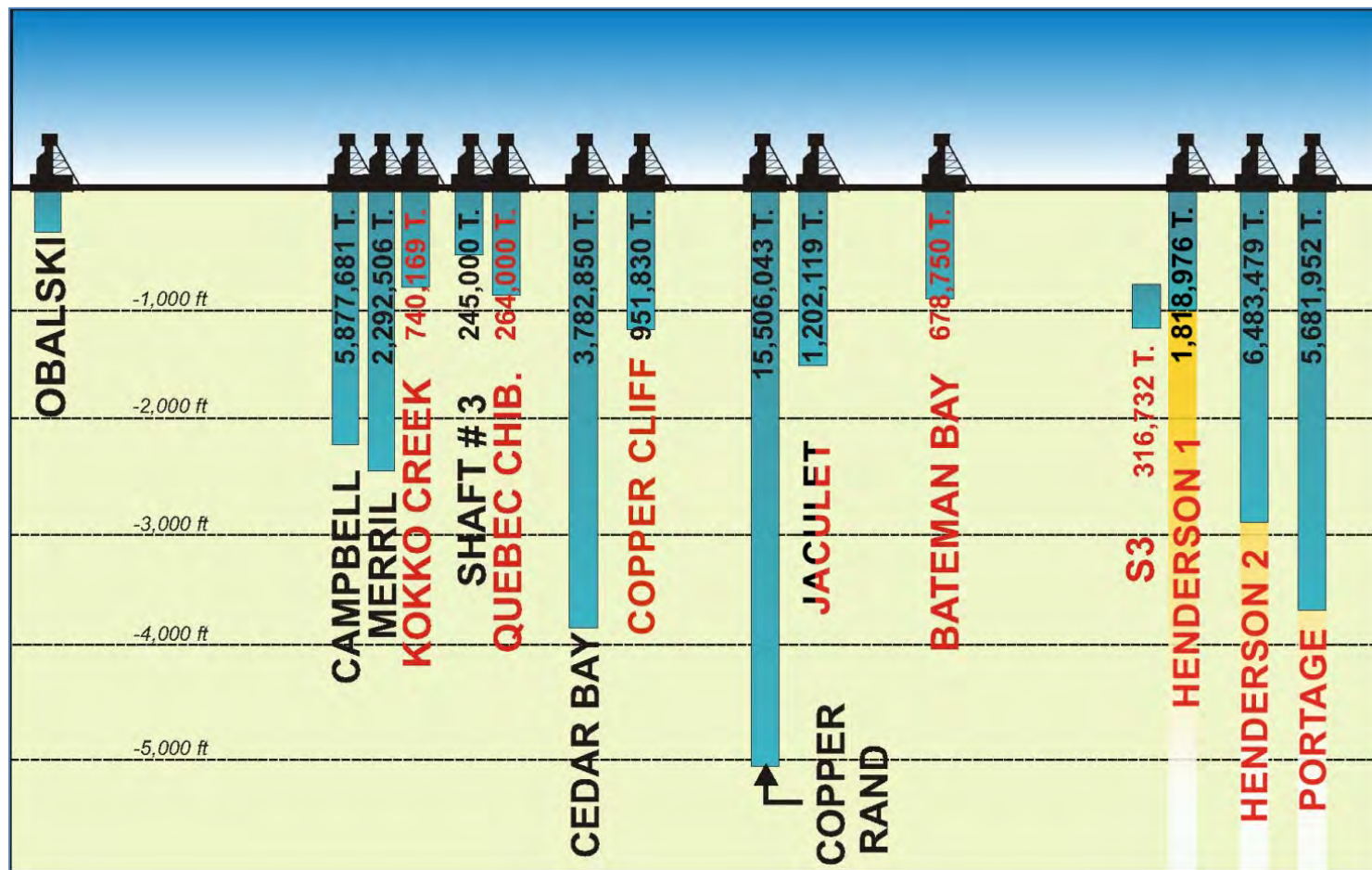
# Geological Map of Chibougamau Area



**Chibougamau Independent Mines Inc.**

Lemoine, Obalski, McKenzie & Roy Townships, Quebec (32 G/16)

# Doré Lake Complex (Copper-Gold)



Longitudinal Section – Chibougamau area, Quebec

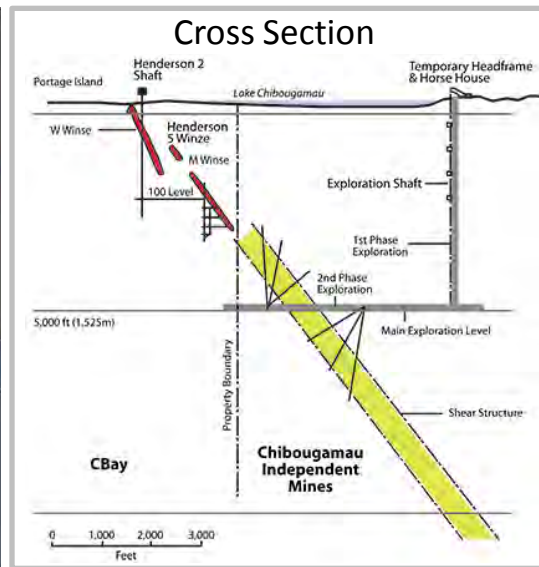
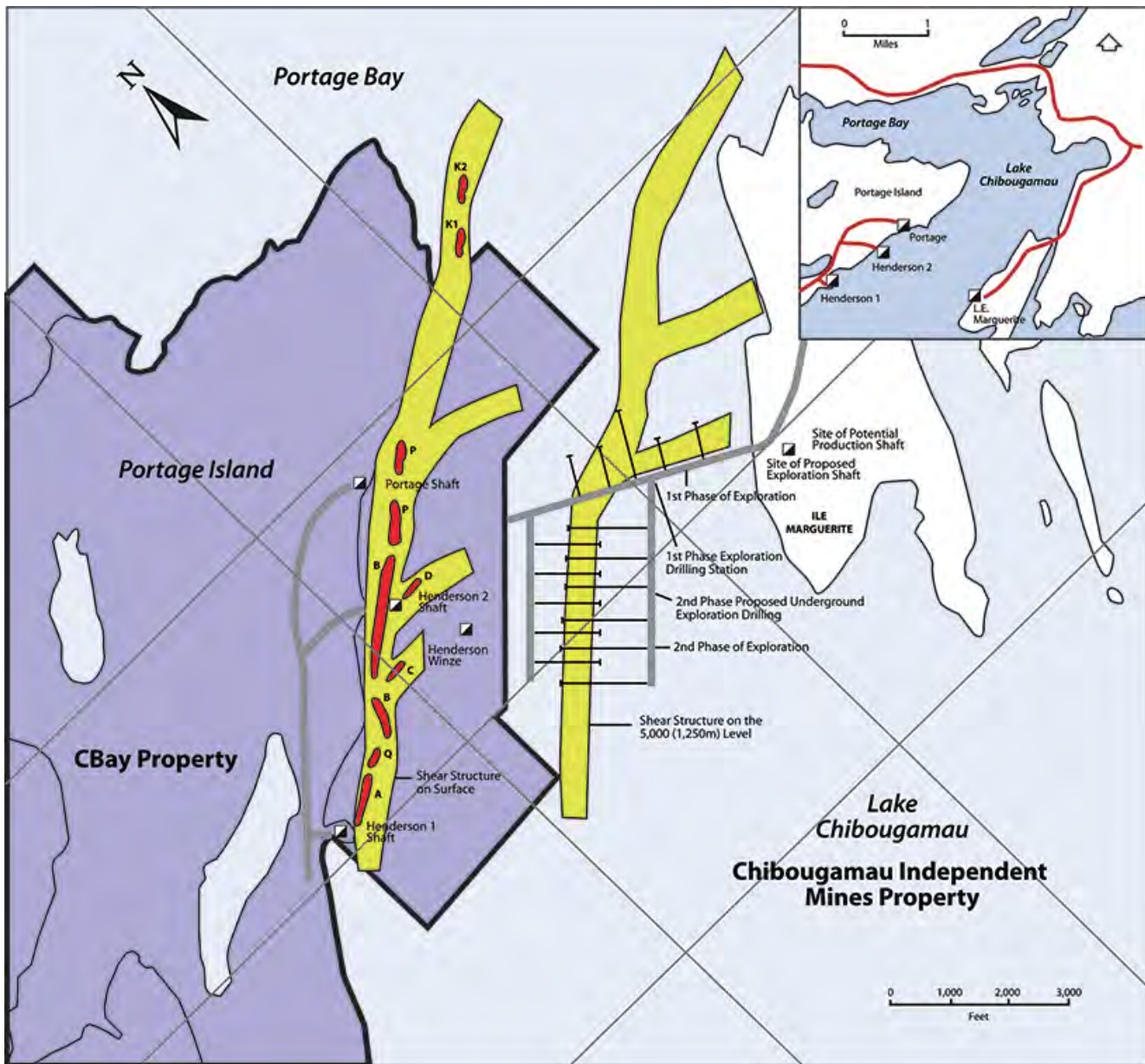
# Some significant gold intersections within previous drilling Berrigan Property 32G16

## Surface diamond drill holes

Hole #	From	To	Interval	% Zn	% Cu	Au g/t	Ag g/t
A-005	131.4 m	140.2 m	8.8 m	5.70%		6.96 g/t	
A-010	97.3 m	105.2 m	7.9 m	4.43%		4.94 g/t	25.36 g/t
A-016	18.9 m	21.2 m	2.3 m	1.51%		6.43 g/t	
	76.2 m	77.7 m	1.5 m	3.45%		8.91 g/t	
A-061	91.6 m	100.6 m	9.0 m	3.76%	0.16%	3.00 g/t	17.24 g/t
	107.1 m	115.7 m	8.6 m	6.15%	0.17%	8.14 g/t	39.70 g/t
A-062	59.3 m	61.1 m	1.8 m	6.92%		4.62 g/t	17.14 g/t
A-063	113.7 m	114.3 m	0.6 m	17.55%		49.23 g/t	404.64 g/t
	129.4 m	132.8 m	3.4 m	8.86%		8.88 g/t	68.16 g/t
	138.9 m	141.5 m	2.6 m	4.69%		4.04 g/t	11.14 g/t
A-065	121.6 m	125.7 m	4.6 m	7.67%		6.08 g/t	21.56 g/t
	139.8 m	144.5 m	4.7 m	2.80%		3.55 g/t	7.64 g/t
	164.7 m	167.2 m	2.5 m	3.13%		6.95 g/t	15.44 g/t
A-066	100.6 m	101.8 m	1.2 m	22.90%		36.65 g/t	39.73 g/t
	159.8 m	168.8 m	9.0 m	6.26%		5.19 g/t	19.60 g/t
A-070	157.1 m	158.2 m	1.1 m	16.75%		10.96 g/t	
A-072	188.7 m	190.9 m	2.2 m	5.08%		3.13 g/t	
A-073	144.8 m	145.1 m	0.3 m	27.90%		32.88 g/t	
A-076	126.3 m	129.8 m	3.5 m	11.07%		3.02 g/t	
A-083	94.3 m	96.3 m	2.0 m	4.45%		3.79 g/t	10.34 g/t
	119.4 m	132.6 m	13.2 m	4.99%		2.88 g/t	15.91 g/t
A-084	130.3 m	142.8 m	12.5 m	4.58%		5.10 g/t	17.18 g/t
A-086	50.9 m	52.1 m	1.2 m	7.00%		15.07 g/t	59.60 g/t
A-103	56.4 m	59.4 m	3.0 m	5.84%		11.61 g/t	

Hole #	From	To	Interval	% Zn	% Cu	Au g/t	Ag g/t
U-02	44.9 m	45.6 m	0.7 m	2.95%		17.81 g/t	89.74 g/t
	90.4 m	91.4 m	1.0 m	13.80%		26.72 g/t	58.91 g/t
	95.8 m	108.7 m	12.9 m	5.75%		3.11 g/t	15.17 g/t
U-03	8.2 m	16.6 m	8.4 m	13.09%		6.98 g/t	20.71 g/t
	49.4 m	64.0 m	14.4 m	8.69%		3.41 g/t	17.49 g/t
U-04	17.4 m	19.7 m	2.3 m	12.77%		4.60 g/t	14.65 g/t
	85.9 m	86.6 m	0.7 m	7.05%		37.68 g/t	78.09 g/t
U-09	71.8 m	75.8 m	4.0 m	2.32%		4.32 g/t	12.43 g/t
SU-23	2.8 m	10.6 m	7.8 m	3.98%		3.33 g/t	20.54 g/t
SU-52	0.0 m	5.0 m	5.0 m	3.88%		3.01 g/t	19.82 g/t
SU-59	0.0 m	4.1 m	4.1 m	5.40%		3.51 g/t	31.04 g/t
TA-87-27	31.1 m	32.3 m	1.2 m	5.60%		17.98 g/t	37.33 g/t
TA-87-40	81.1 m	83.5 m	2.4 m	10.05%		2.96 g/t	50.05 g/t
	91.4 m	94.2 m	2.8 m	10.82%		3.23 g/t	19.19 g/t
TA-90-50	65.5 m	70.1 m	4.6 m	4.12%		6.78 g/t	10.12 g/t
	84.6 m	87.5 m	2.9 m	3.90%		3.20 g/t	
	95.5 m	106.7 m	11.2 m	10.39%	0.10%	2.54 g/t	19.26 g/t
	114.0 m	129.5 m	15.5 m	6.57%	0.10%	8.05 g/t	23.58 g/t
TA-90-51	197.4 m	200.0 m	2.6 m	5.39%	0.21%	3.52 g/t	20.10 g/t
TA-90-52	201.2 m	203.3 m	2.1 m	5.21%		5.70 g/t	11.60 g/t
TA-90-56	81.0 m	84.4 m	3.4 m	5.75%		4.06 g/t	
	164.4 m	166.9 m	2.5 m	5.23%		6.18 g/t	
	215.7 m	219.6 m	3.9 m	6.74%		3.95 g/t	
TLT-09	247.4 m	249.7 m	2.3 m			4.28 g/t	

# Henderson-Portage Shear Plan Map with Depth Projection & Cross Section (per Western Mining)



## Henderson I - Total Ore Extracted

1960–1971

1,818,976 T @ 2.23% Cu, 0.045 oz/t Au

## Henderson II - Total Ore Extracted

1960–1988

6,483,479 T @ 1.60% Cu, 0.041 oz/t Au

## Portage Mine - Total Ore Extracted

1959–1997

6,212,934 T @ 1.77% Cu, 0.114 oz/t Au

- Mine package forms a single multi-lensed orebody stretching along a broad NE-striking shear with > 1 mile of strike
- Portage Mine mined to a depth of 3,600 feet
- Westminer planned to explore and develop to 5000-foot depth



# Select - 2013 Exploration Results

- **Deep Penetration IP Completed**

- Numerous high priority drill targets identified

- **Data Compiled in many priority areas**

Drilling	Cu (%)	Zn (%)	Ag (g/t)	Au (g/t)	Fe <sub>2</sub> O <sub>3</sub> (%)	TiO <sub>2</sub> (%)	V <sub>2</sub> O <sub>5</sub> (%)	Over (m)
Bateman-Jaculet #3	5.23		50.0	0.97				11.5
Bateman-Jaculet #3	1.58		11.10	0.03				36.5
Including	3.80		29.05	–				3.00
and	3.13		21.78	–				4.45
and	2.57		18.59	–				2.50
Bateman-Jaculet #3	2.93		39.0	0.68				43.5
Including	5.12		48.3	1.19				15.0
Including	1.92		37.6	0.44				25.5
Bateman-Jaculet #3	1.12		6.7	0.32				45.0
Berrigan		1.28	9.05	1.87				10.1
		1.14	28.06	1.51				26.9
Including		4.99	37.40	2.66				4.40
Mont Sorcier North					43.19	0.96	0.22	220.8m (724.4 ft)
Mont Sorcier South					45.50	0.75	0.44	54.0m (177 ft)

# Share and Company Profile

## Shares Issued October 31, 2018

Shares Issued 41,958,442

Stock Options 1,525,000

**Shares Fully Diluted 43,483,442**

Insiders Shareholdings (11%) 4,275,058

- Own 100% of its property interests
- Board of Directors with exploration, mining and finance experience

